

# TORQUE WRENCH INTERCHANGEABLE HEADS PRESET REVERSIBLE



EGA MASTER torque wrenches with interchangeable preset torque heads are a tightening tool used to apply a specific torque, thus achieving greater Safety and Durability.

**EGATORK**



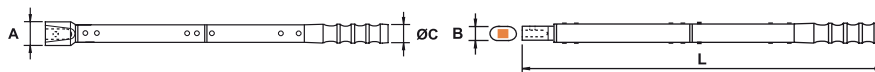
\* 12M

**1.** Designed with the ability to change the heads used, which makes them versatile for different applications.



**2.** Measurement units: N.m, Lb.ft, Lb.in

**3.** Individual carrying case.



COD.	mm	N.m	Lb.ft	Lb.in		L (mm)	A (mm)	B (mm)	C (mm)	Kg	
58510	9 x 12	4-20	2,9-14,7	30-180	Matt	155	20	20	29	0,2	1
58511		15-85	12-60	130-750		310					
58512	14 x 18	50-300	40-225	440-2655	690	32	25	1,3			
58513	24 x 32	200-1000	150-750	1770-8850	1260	55	38	38	4,9		

## FEATURES

Preset torque within its torque range to be specified by the customer when the order is placed.

## TECHNICAL SPECIFICATION

Material	Body: Steel Matte finish
Precision	4%
Calibration certificate	•
Reversible	•
Individual case	•

# EGATORK

■ INTERCHANGEABLE HEADS 9 x 12

■ OPEN HEADS

■ MM

COD.	AF mm	mm
56250	7	9 x 12
56251	8	
56252	9	
56253	10	
56254	11	
56255	12	
56256	13	
56257	14	
56258	15	
56259	16	
56260	17	
56261	18	
56262	19	



COD.	AF inch	Teeth	mm
56246	1/4	45	9 x 12
56247	3/8		
56248	1/2		



COD.	AF inch	Teeth	mm
57595	1/4	52	9 x 12
57596	3/8		
57597	1/2		



■ INCH

COD.	AF inch	mm
56445	1/4	9 x 12
56446	5/16	
56447	3/8	
56448	7/16	
56449	1/2	
56450	9/16	
56451	5/8	
56452	11/16	
56453	3/4	



COD.	AF inch	Teeth	mm
59084	1/4	72	9 x 12
59085	3/8		
59086	1/2		



■ ADJUSTABLE HEADS

COD.	CAP. (mm)	mm
56291	5-30	9 x 12



■ RATCHET HEADS

COD.	AF inch	Teeth	mm
57563	1/4	52	9 x 12
57564	3/8		
57562	1/2		



■ BOX HEADS

■ MM

COD.	AF mm	mm
56264	7	9 x 12
56265	8	
56266	9	
56267	10	
56268	11	
56269	12	
56270	13	
56271	14	
56272	15	
56273	16	
56274	17	
56275	18	
56276	19	
56277	21	
56278	22	
56294	24	



# EGATORK

## INCH

COD.	AF inch	mm
56454	5/16	9 x 12
56444	1/4	
56455	3/8	
56456	7/16	
56457	1/2	
56458	9/16	
56459	5/8	
56460	11/16	
56461	3/4	
56462	13/16	
56463	7/8	



## HEX BIT HOLDER HEADS

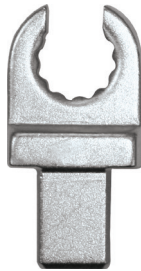
COD.	inch	mm
59072	1/4	9 x 12
59073	5/16	



## BOX OPEN HEADS

## MM

COD.	AF mm	mm
56279	10	9 x 12
56280	11	
56281	12	
56282	13	
56283	14	
56284	16	
56285	17	
56286	18	
56287	19	
56288	21	
56289	22	
56293	24	



## REVERSIBLE HEX BIT HOLDER HEADS

COD.	inch	mm
59076	1/4	9 x 12
59077	5/16	



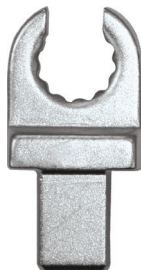
## WELD-ON HEAD

COD.	mm
59082	9 x 12



## INCH

COD.	AF inch	mm
59065	3/8	9 x 12
59066	7/16	
59067	1/2	
59068	9/16	
59069	5/8	
59070	11/16	
59071	3/4	



## ADAPTERS

COD.	AF inch	mm	L (mm)	g
59114	9 x 12	14 x 18	45	22



■ INTERCHANGEABLE HEADS 14 x 18

■ OPEN HEADS

■ MM

COD.	AF mm	mm
64869	8	
64870	9	
64871	10	
64872	11	
64873	12	
65369	13	
65370	14	
65371	15	
65372	16	
65373	17	
65374	18	
65375	19	
65376	21	14 x 18
65377	22	
59058	23	
65378	24	
59059	25	
65379	26	
65380	27	
65381	29	
65382	30	
65383	32	
59061	34	
59062	36	
59063	38	
59064	41	



■ INCH

COD.	AF inch	mm
59080	7/16	
56464	1/2	
56465	9/16	
56466	5/8	
56467	11/16	
56468	3/4	
56469	13/16	14 x 18
56470	7/8	
56471	15/16	
56472	1	
59081	1.1/16	
56473	1.1/8	
56474	1.1/4	



■ ADJUSTABLE HEADS

COD.	CAP. (mm)	mm
56292	10-41	14 x 18



■ RATCHET HEADS

COD.	AF inch	Teeth	mm
65384	3/8		
65385	1/2	24	14 x 18
56290	3/4	45	



COD.	AF inch	Teeth	mm
57572	1/2	52	14 x 18



COD.	AF inch	Teeth	mm
57598	1/2		
57599	3/4	52	14 x 18



COD.	AF inch	Teeth	mm
59087	3/8		
59088	1/2	72	14 x 18
59089	3/4		

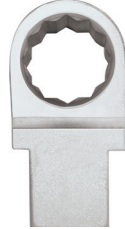


# EGATORK

## BOX HEADS

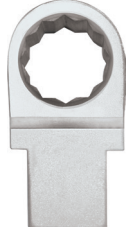
### MM

COD.	AF mm	mm
64875	13	14 x 18
64876	14	
64877	15	
64878	16	
64879	17	
64880	18	
64881	19	
64882	21	
64883	22	
64884	24	
64885	27	
56540	28	
64886	30	
64887	32	
56541	34	
56542	36	
56543	41	



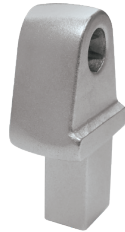
### INCH

COD.	AF inch	mm
56443	7/16	14 x 18
56475	1/2	
56476	9/16	
56477	5/8	
56478	11/16	
56479	3/4	
56480	13/16	
56481	7/8	
56482	15/16	
56483	1	



## HEX BIT HOLDER HEADS

COD.	inch	mm
59075	5/16	14 x 18



## REVERSIBLE HEX BIT HOLDER HEADS

COD.	inch	mm
59078	1/4	14 x 18
59079	5/16	



## WELD-ON HEAD

COD.	mm
59083	14 x 18



## ADAPTERS

COD.	AF inch	mm	L (mm)	g
59115	14 x 18	9 x 12	50	32
59117		24 x 32	80	900





# EGATORK

## INTERCHANGEABLE HEADS 24 x 32



### OPEN HEADS

#### MM

COD.		
68242	20	24 x 32
68243	24	
68244	27	
68245	28	
68246	30	
68247	32	
68248	34	
68249	36	
68250	38	
68251	41	
68252	45	
68253	46	
68254	50	
68255	55	
68256	60	
68257	65	
68258	67	
68259	70	
57097	80	





#### INCH

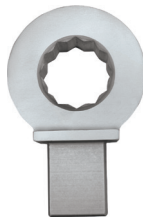
COD.		
56484	5/8	24 x 32
56485	3/4	
56486	7/8	
56487	1.1/8	
56488	1.3/4	
56489	2.1/4	



### BOX HEADS



#### MM

COD.		
68260	24	24 x 32
68261	30	
68262	32	
68263	34	
68264	36	
68265	38	
68266	41	
68267	46	
68268	50	
68269	55	
68270	60	
68271	65	
68272	70	





### BOX OPEN HEADS

#### MM

COD.		
68273	19	24 x 32
68274	30	
68275	32	
68276	36	
68277	38	
68278	50	
68279	70	






### INCH

COD.		
56490	15/16	24 x 32
56491	1.1/8	



### ADAPTERS

COD.			L (mm)	
59116	24 x 32	14 x 18	90	500
59119		27 x 36	105	1250



\* 12M 12 MONTHS OF WARRANTY