

# FLANGE SPREADERS HYDRAULIC



EGA Master's hydraulic flange spreaders have been designed to make it easier for the operator to maintain pipes safely.

**Separating  
force of up to  
14 tons!**



\* 12M

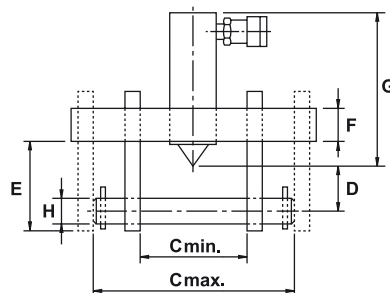
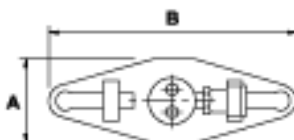
WITH STUD




**1.** Two models available, with pin and stepped.



**2.** Thanks to the design of the separation wedge, the EGA Master hydraulic separators allow a **separation force of up to 14 tons.**

**3.** With a compact cylinder, which provides smooth and uniform opening of the flange.

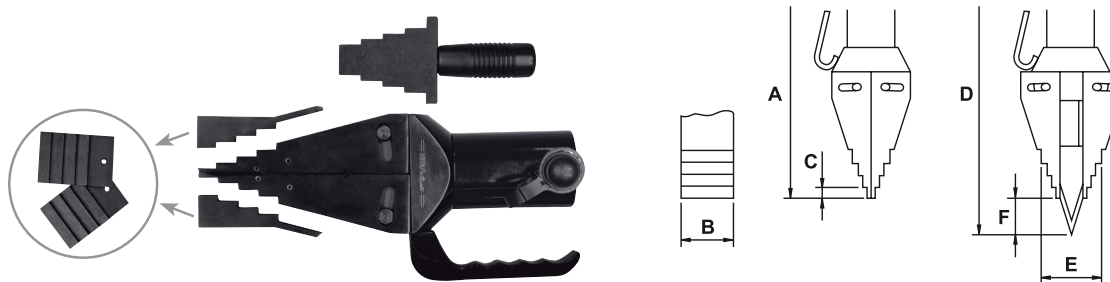


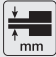


COD.	 Max Max	 mm	TONS.	A (mm)	B (mm)	C min. (mm)	C max. (mm)	D (mm)	E (mm)	F (mm)	G (mm)	H (mm)	 CAP. cm³
<b>57522</b>	2 x 57	1,5-34	5	75	210	70	150	30	90	25	155	18	200
<b>57523</b>	2 x 85	3-43	10	110	280	105	210	45	115	38	205	27	

12M

TECHNICAL SPECIFICATION	
Weight with oil	
	57522 5 Kg
	57523 18 Kg
Stud size	
	57522 18 mm
	57523 27 mm
Stroke	
	57522 38 mm
	57523 54 mm
Internal safety valve	•
Spring return cylinder	•
Maximum operating pressure	700 bar / 10,000 psi
Connection	Quick coupler screw type, 1" UNS

## STEPPED



COD.	 mm	 mm	TONS.		A (mm)	B (mm)	C (mm)	D (mm)	E (mm)	F (mm)
<b>57524</b>	6	75	14	78	290	65	15	320	60	35

12M

TECHNICAL SPECIFICATION	
Weight with oil	7,1 Kg
Stepped blocks	2 pcs
Safety block	1 pc
Internal safety valve	•
Spring return cylinder	•
Maximum operating pressure	700 bar / 10,000 psi
Connection	Quick coupler screw type, 1" UNS